



▲ Cardenas Butte

▲ Escalante Butte

▲ Tanner Trail

Navajo Point

Lipan Point

64

**Tanner Trail**

E Rim Dr

Image © 2010 DigitalGlobe  
© 2010 Google

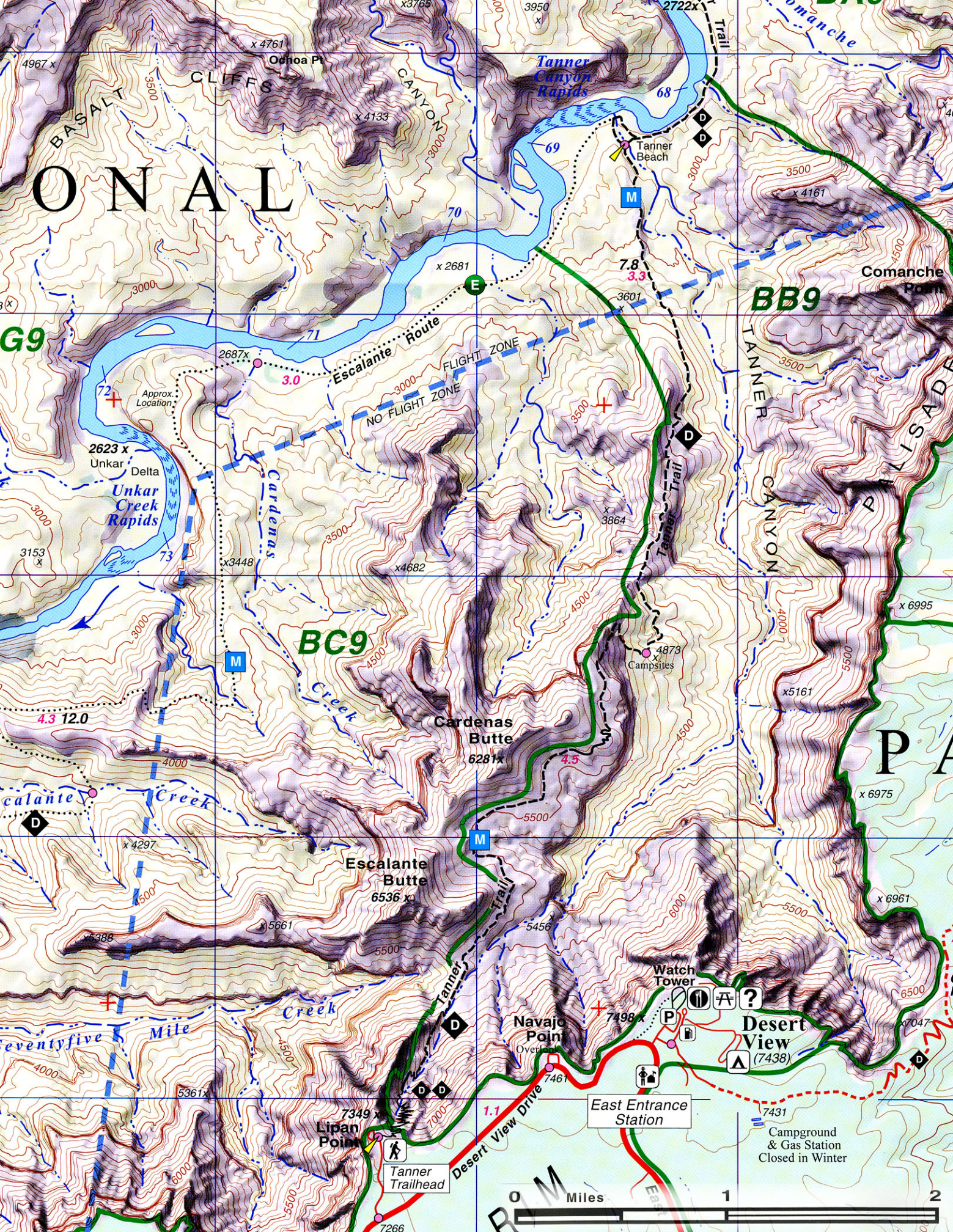
© 2009 Google

Imagery Date: Nov 17, 2006

36° 2.866' N 111° 50.632' W elev 5785 ft

Eye alt 14110 ft





# GRAND CANYON NATIONAL PARK

G9

BC9

BB9



Campground & Gas Station Closed in Winter

East Entrance Station

Desert View (7438)

Navajo Point Overlook

Escalante Butte 6536x

Cardenas Butte 6281x

Unkar Creek Rapids

Tanner Canyon Rapids

CLIFFS

BASALT

TANNER CANYON

Comanche

P A

4967 x

x 4761

Ochoa Pt

x 4133

3950 x

2722x

3500

3000

68

69

70

x 2681

7.8

3.3

3601

3500

x 4161

2687x

3.0

Escalante Route

FLIGHT ZONE

NO FLIGHT ZONE

3000

3500

3153 x

2623 x

Unkar Delta

73

x 3448

3500

x 4682

x 3864

4500

x 6995

4.3 12.0

Escalante Creek

4000

x 4297

4500

Escalante Butte

6281x

4.5

4873

Campsites

x 5161

x 6975

x 388

5661

5500

5456

8000

5500

x 6961

6500

x 7047

Seventyfive Mile

4000

5361x

7349 x

Lipan Point

7000

7498 x

7461

East Entrance Station

7431

Campground & Gas Station Closed in Winter

Tanner Trailhead

7266

Desert View Drive

1.1

East Entrance

7498

7461

7431

7431

7431

7431

7431

7431

7431





Carbon Butte

Cape Solitude

AF9

BA9

BB9

SA9

ON

NAL

2623 x







Camps 2 and 3

Peñasco Tr.

©2009 Google

Image © 2010 DigitalGlobe  
© 2010 Google

Imagery Date: Nov 17, 2006

36° 7.585' N 111° 49.286' W elev 2700 ft

Eye alt 5038 ft





Below Tanner Rapid

69

Tanner Rapid (4)  
20' Drop

Basalt Creek

68

Tanner  
68 Miles

Espejo

67

Above Espejo

66

Palisades Creek

Lava Creek

Lava Canyon  
(Chuar) Rapid (4)  
4' Drop

Lava Canyon

65

Carbon

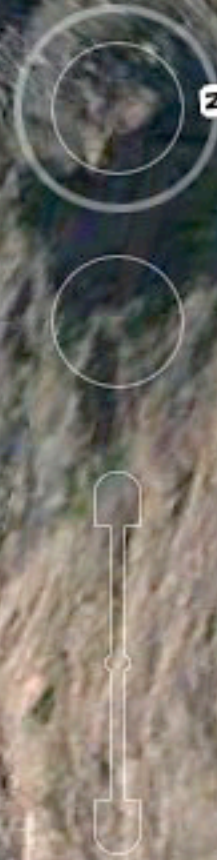
Carbon Creek

64

Hopi Salt Mine -  
no visitation on  
left bank from mile  
63 to 64.5



Lava Canyon



©2009 Google

Image © 2010 DigitalGlobe

Imagery Date: Nov 17, 2006

36°08'24.89" N 111°48'58.45" W elev 2699 ft

Eye alt 4205 ft